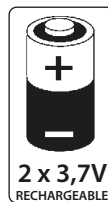
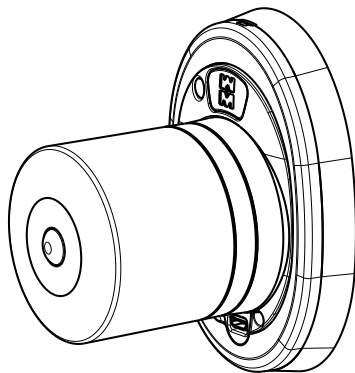


MOTORISED KNOB XMP01... USER MANUAL



GENERAL INSTRUCTIONS

This manual is intended for technically qualified and trained installers.

Mottura Serrature di Sicurezza S.p.A. thanks you for choosing this product and reminds you:

- To read these instructions very carefully before installing this product and before doing any maintenance.
- That all assembly and connection procedures must follow good practice procedures and comply with current laws and standards.
- To NOT install this product in explosive rooms or atmospheres or in the presence of inflammable fumes/gases.
- DO NOT install this product on a door with risk of contact with water or atmospheric agents unless the door is adequately protected.
- To switch off the power supply and disconnect all live parts before doing any installation or maintenance work on the product. To take all possible precautions to eliminate the risk of electrical shock when performing installation or maintenance procedures described in this manual.
- That the installer must deliver these instructions and all of the maintenance instructions to the user.
- To keep these instructions for future reference and attach the sales receipt to validate the warranty.
- To contact authorized dealers only in case of problems.

Mottura Serrature di Sicurezza S.p.A. may change the characteristics of the products described in these instructions at any time and without notice.

WARRANTY TERMS

This product has been inspected by Mottura Serrature di Sicurezza S.p.A. and is guaranteed to be free of all manufacturing defects for the time specified by current Italian law, starting on the date of purchase indicated on the sales receipt. The warranty is in force if the sales receipt, showing details identifying the product, is exhibited to customer service personnel. The warranty covers the replacement or repair of parts found defective at origin due to manufacturing defects. Costs of shipping to and from service centres will be paid by the customer. In case of repeated malfunctions of the same type or unreparable defects, Mottura Serrature di Sicurezza S.p.A. may, at its own discretion, replace the entire product.

The warranty on the replaced product will continue until expiration of the original warranty. If service work must be performed at the customer's premises, the customer shall – if requested – pay the authorised technical personnel travel expenses.

Risks related to product transportation shall be covered by the customer when shipped directly by the customer, and by the authorised technician when the product is picked up and shipped by the technician

LIMITS OF LIABILITY

The warranty does not cover damage deriving from:

- Negligence, carelessness or use in any manner not described in these instructions
- Failure to protect the device before doing any procedure that may generate scrap or waste (welding, drilling of panels, drilling of structure, etc.) that prevents its correct functioning
- Maintenance performed in any manner not described in these instructions or by unauthorised personnel
- Transport without the necessary precautions and from any circumstances that cannot be attributed to manufacturing defects.

In addition, Mottura Serrature di Sicurezza S.p.A. declines all liability for any damage to persons or property deriving from failure to observe all of the precautions described herein.

N.B. : All electrical connections and mounting operations as well as subsequent service operations must be performed with the product DISCONNECTED from the power supply system.

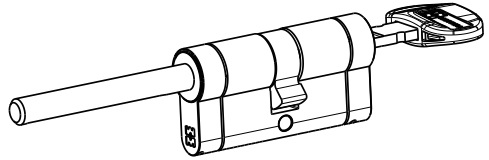


safeguarding your security

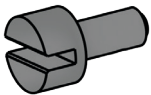
MADE
IN
ITALY

KEY / KNOB PROVISION

Can be installed with XMOTO basic kit

**ACCESSORIES (Not Included)****KEY / KEY**

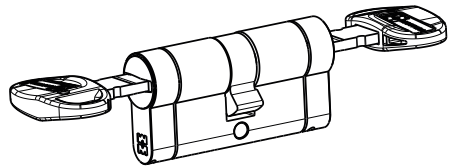
Can be installed with accessory 99.793 (connection bushing) + compensation shims 94.431



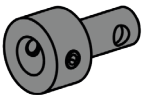
ART. 99.793



ART. 94.431

**KEY / KNOB PROVISION**

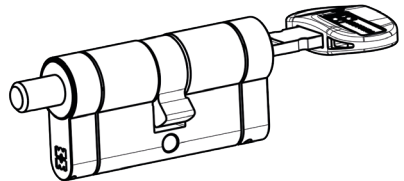
Can be installed with accessory 99.794 (knob extension bushing) + compensation shims 94.431



ART. 99.794



ART. 94.431





WARNINGS

! WARNING !

The device contains lithium-ion batteries (Li-ion).

The device contains a short range radio frequency transmitter in the band 2400-2483.5 MHz and uses Bluetooth Low Energy technology.

The installation should be carried out without installing the batteries on board and without the network power supply cable connected. This is because if the knob activates, even accidentally, during installation, when it is not yet completely mounted, when it rotates it could cause serious injuries to the operator!



Be careful not to open the door during recharging and notify other users of this if this can cause a violent tearing of the charge cable or battery charger from the socket. Be very careful when turning the knob by hand when the USB cable is connected: your fingers could hit the connector and irremediably damage the internal electronic board.

POWER SUPPLY WARNINGS

(WITH NON-RECHARGEABLE BATTERIES) Only use 3 lithium batteries, 3 V CR123 or CR123A type (dimensions ANSI 5018LC/ IEC CR17345) of the same brand, model and production lot. Do not use batteries of another type or model.

(WITH RECHARGEABLE BATTERIES) A bridge contact code 99.770 must be present in the knob with rechargeable batteries inserted in the specific housing (it should never be removed). Only use 2 rechargeable batteries type RCR123A/16340H lithium-ion (Li-ion) 650 mAh 3,7 V 2,4Wh PROTECTED

(WITH NETWORK) For the network connection use the specific connector located under the escutcheon. Use a power supply of 9V (4.45A-40W) Cod. 99.767.
Cable 99.780 length (4m) to use with XMoto and peripheral devices in network version.

In case of power failure (mains power version) or battery replacement, you will need to open / close once with the smartphone to reset the internal clock.

ASSEMBLY WARNINGS

XMoto is to be mounted only on the inside side of the door.

XMoto CANNOT be installed on locks without a handle spring latch.

XMoto CANNOT be installed on locks with fast unlocking or automatic reclosing.

If the version with rechargeable batteries is used, make sure that the two pins are correctly inserted in the seats in the bridge contact battery (99.770) installation.

XMOTO CANNOT be installed on rim locks that do not have fixing holes for the Defender with 38mm centre distance.

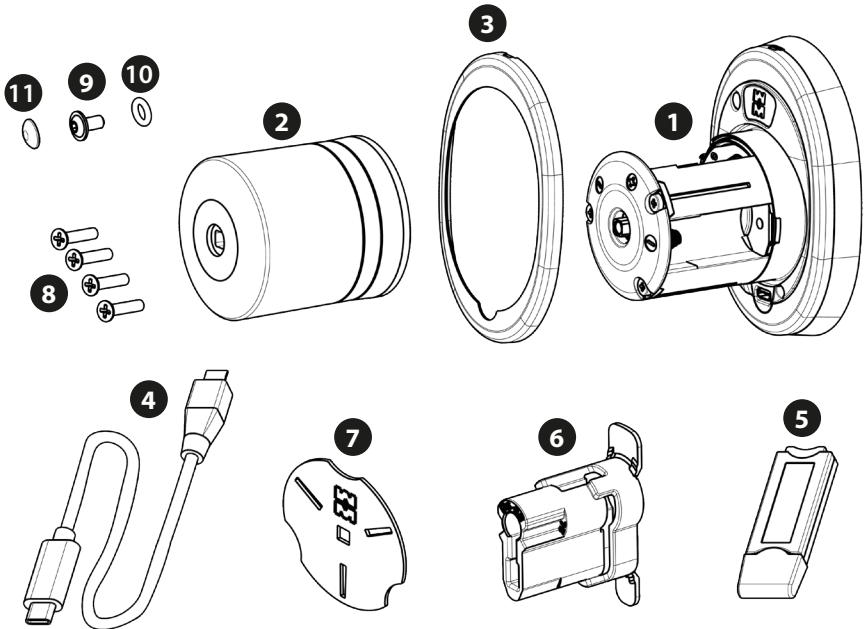


Pursuant to article 26 of Italian Legislative Decree no. 49 of 14 March 2014 "Implementation of EU Directive 2012/19 concerning waste electrical and electronic equipment (WEEE)" and article 9 of Italian Legislative Decree no. 188 of 20 November 2008 "Implementation of EC Directive 2006/66 on batteries and accumulators and waste batteries and accumulators" adequate waste sorting for subsequent sending of disposed equipment to recycling, treatment and environmentally compatible disposal contributes to avoiding possible negative effects on the environment and human health and promotes reuse and/or recycling of the materials composing the equipment. Unlawful disposal of the product by the user may result in the application of penalties pursuant to current laws and regulations on the matter. We remind that batteries and power adapters, if present, must be removed before the device is disposed. Batteries and adapters must be collected and separately disposed.



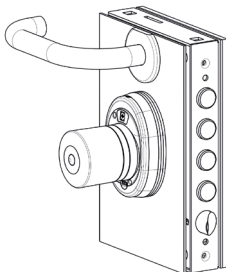
PACKAGE CONTENTS

- 1 x Knob body
- 2 x Knob cover
- 3 x Escutcheon cover
- 4 x Cable for master key
- 5 x Master key
- 6 x Tang cutting template
- 7 x Set screw tightening template
- 8 x Knob escutcheon fixing screws
- 9 x Knob cover fixing screw
- 10 x Rubber washer for black screw
- 11 x Rubber cap for black screw

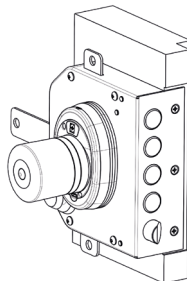


POSSIBILITY OF INSTALLING ON DIFFERENT DOOR TYPES

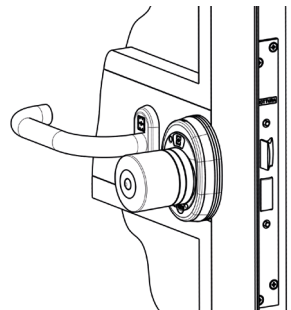
SECURITY DOORS



WOODEN DOORS

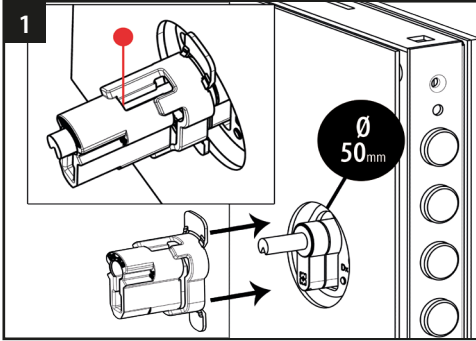


ALUMINIUM DOORS

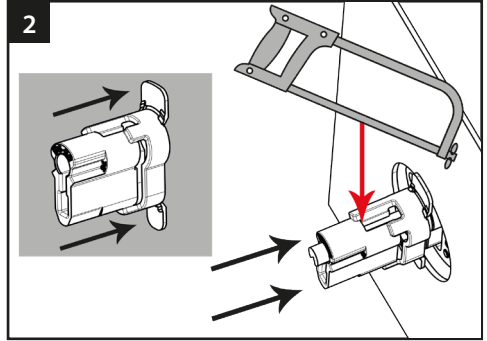


ASSEMBLY INSTRUCTIONS

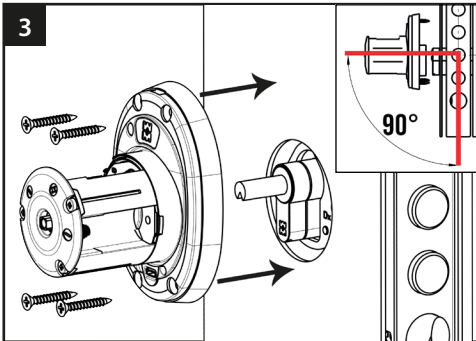
(SEE WARNINGS PAGE 3)



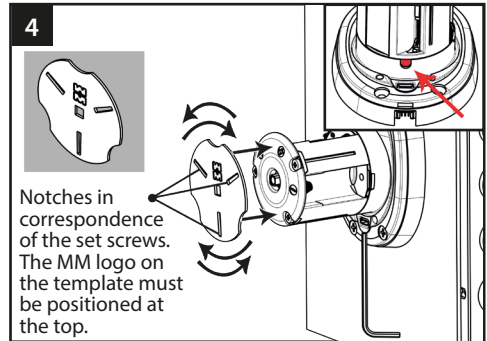
Check the length of the tang using the template **6**. If the tang is shorter than the cutting point ● it will be necessary to use accessory 99.794 (not provided) as an extension.



Insert the cutting template **6** on the tang until in contact with the door panel. Mark the cutting point, remove the template and make the cut on the tang.

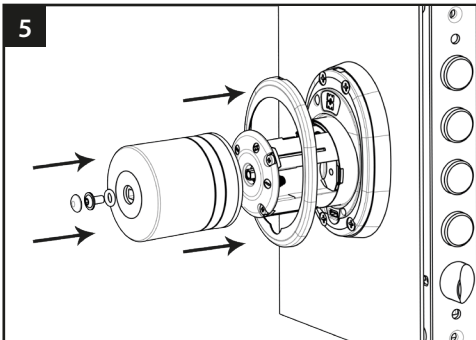


Make sure that the tang has the groove facing down and later fit the knob (without the cover). Fix it using the 4 holes of the escutcheon (they can also be used as template for marking the screw guide holes).



Notches in correspondence of the set screws. The MM logo on the template must be positioned at the top.

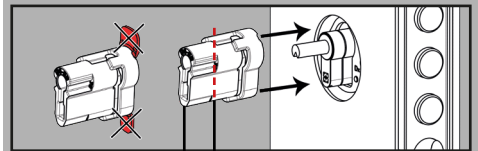
Tighten the 3 set screws on the tang (to turn the knob use accessory **7**). To be certain that the set screws are in the correct position make sure that the template notch corresponds to the tightening hole and repeat the operation for the other 2.



Power up the knob, by inserting the batteries following the polarity indicated on the same or connecting it to the network. Insert and fix the cover and escutcheon. (Power supply see page 7).

WARNINGS

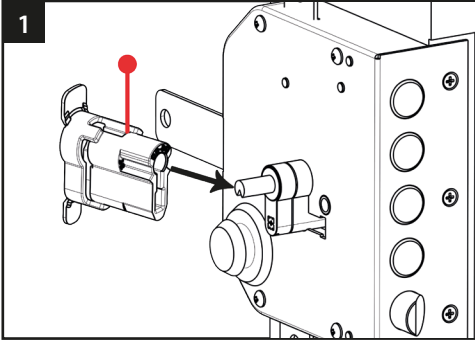
In case the cylinder shell does not fit completely in the X MOTO body, it will be necessary to cut the two small wings and use the template as extension of the cylinder, and trimming it according to the door thickness.



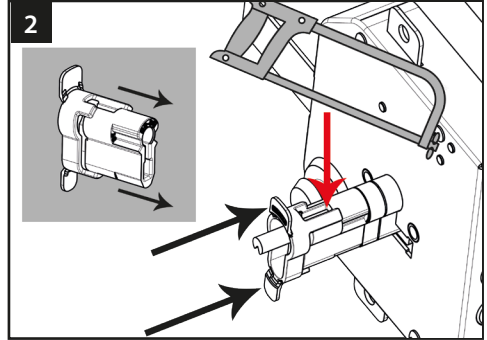
For doors with thickness from 76 - 90 mm

For doors with thickness from 61 - 75 mm

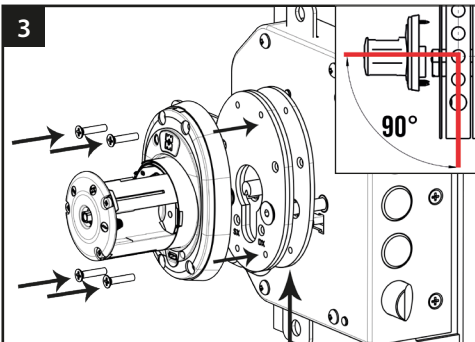
After the operation make sure that X MOTO fits on the template.



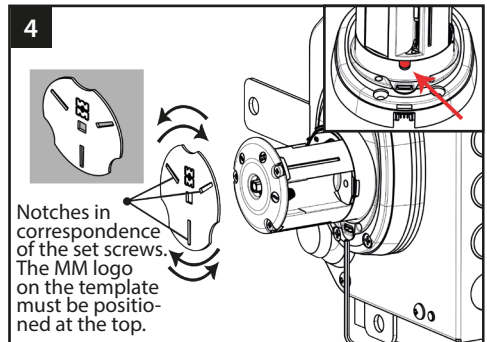
Check the length of the tang using the template ⑥ inserting it from the narrow side. If the tang is shorter than the cutting point ● it will be necessary to use accessory 99.794 (not provided) as an extension.



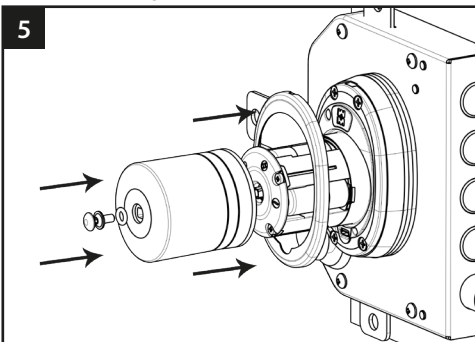
Insert the cutting template ⑥ on the tang from the narrow side until it hits the cylinder head. Mark the cutting point, remove the template and make the cut on the tang.



Fix the 3 plates (not included) on the lock with the defender fixing screws. Fit the knob on the tang making sure that the groove is facing down. Fix the escutcheon using the 4 threaded screws. (SEE WARNINGS plate use)



Fix the 3 set screws on the tang (to turn the knob use accessory ⑦). To be certain that the set screws are in the correct position make sure that the template notch corresponds to the tightening hole and repeat the operation for the other 2.



Power up the knob, by inserting the batteries following the polarity indicated on the same or connecting it to the network. Insert and fix the cover and escutcheon. (Power supply see page 7).

WARNINGS plate use

94.427 D/S

If you have a Mottura lock then you have to use (94 427D/S) as first plate for fixing the cylinder + 2x 94.431. (not provided)



94.431

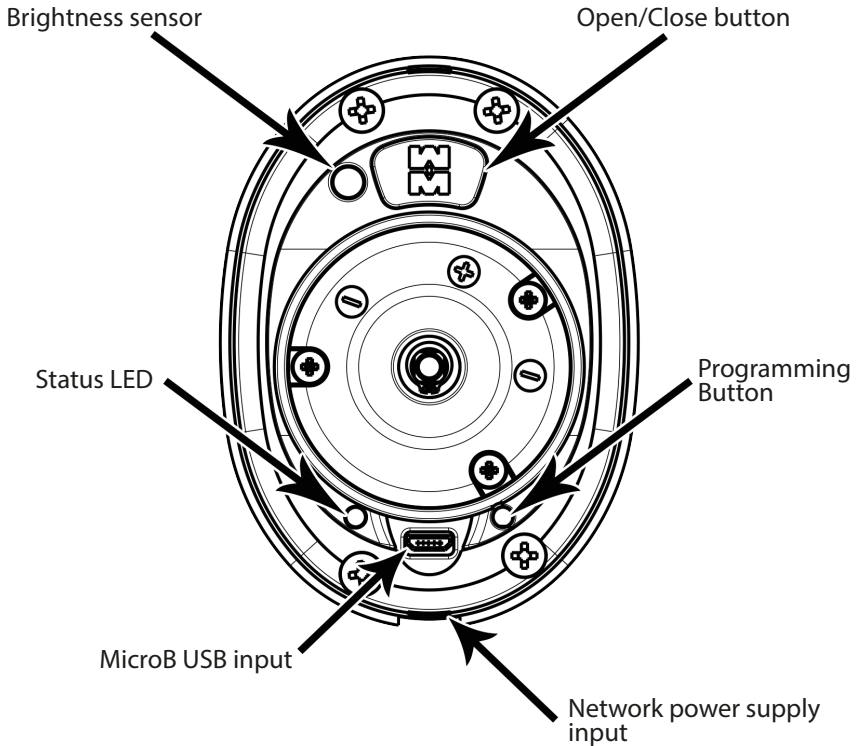
If you are using a lock with front fixing of the cylinder use the plates 3x 94.431 as shim. (not provided)



KNOB USER MANUAL (SEE WARNINGS PAGE 3) ⚠

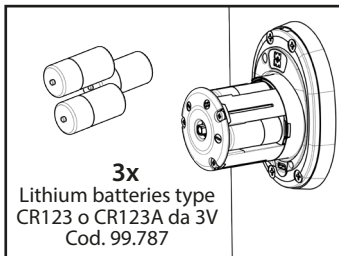
KNOB DESCRIPTION

The motorised knob X-MOTO is a mechatronic device used to open / close a lock via rotation of the European cylinder attached to it. The device can be powered by batteries, rechargeable batteries or network with a specific class II power supply (SEE POWER SUPPLY). The device is equipped with a Bluetooth Low Energy that makes it connectible to a series of other Mottura peripheral devices and smartphones after a pairing procedure with the supplied owner key. Activation of the cylinder is always possible using a mechanical key (external side) or manual knob (internal side). A simple button on the inside makes it possible to open/close it.

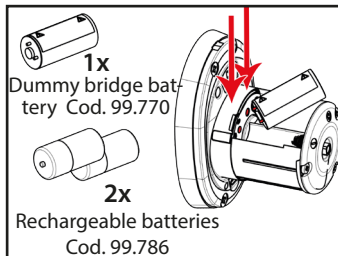


POWER SUPPLY (SEE WARNINGS PAGE 3) ⚠

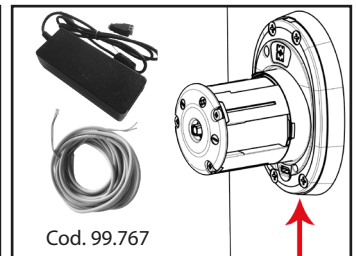
With batteries



With rechargeable batteries



With network

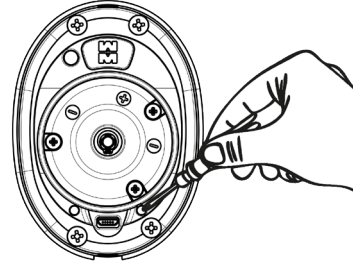


PROGRAMMING BUTTON

The knob programming button is a multifunction button that when kept pressed for a certain time (SEE TABLE) changes from one function to the next indicating this by lighting up the status led. When the colour of the desired function is reached the button needs to be released, make sure that the specific colour of the desired function is flashing and press the button again within a 10 sec. timeout, at this point the function is performed otherwise let the timeout elapse to exit.

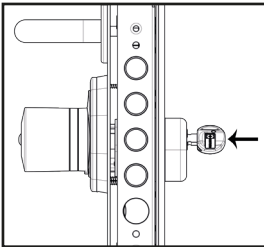
Available Functions

TIME (sec)	STATUS LED COLOUR	FUNCTION	MASTER KEY
0 ÷ 3	RED	Pairing with smartphone	Requested
3 ÷ 6	GREEN	Pairing with Mottura Accessory	Requested
6 ÷ 9	BLUE	BLE factory reset	Requested
9 ÷ 10	NONE	None	
11 ÷ 14	RED	Lock learning	
14 ÷ 17	GREEN	None	

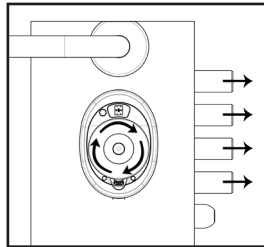


Use a tool with a flat or round tip to reach the programming button.

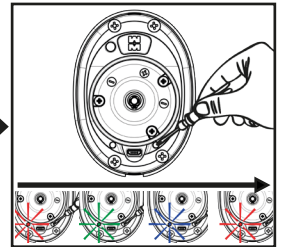
AUTOMATIC LEARNING PROCEDURE OF LOCKTURNS



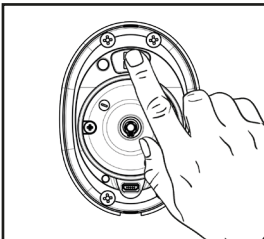
Mount the complete knob, insert a mechanical key in the cylinder (not part of a bunch of keys).



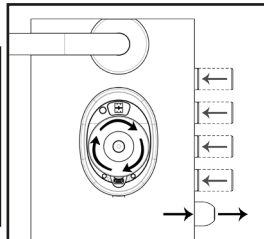
Close the lock with all the turns and until the end of the stroke of the cam on the deadbolts.



Keep the programming button pushed and wait until the led lights up in sequence of **red**, **green**, **blue**, off and again **red**.



Press the open/close button of the knob within 30 sec. The spring latch will move to open position and after a few seconds the knob will make a sound indicating the end of the procedure.



The lock will begin to open, once stopped it will hold the spring latch emitting beeps. With the key turn the cylinder until the spring latch comes out and extract the key.



RELEASE

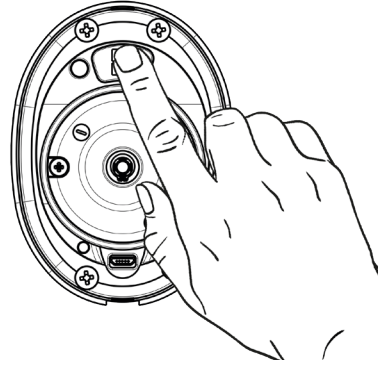
At this point the LED will flash **RED**.

Make a **CLICK** again on the programming button to confirm within 30 seconds.

OPEN/CLOSE BUTTON

From the inside it is possible to open / close the lock using the OPEN/CLOSE button as follows:

TIME (sec)	COLOUR - SUONDO	FUNCTION - BUTTON PRESSING
0 ÷ 1	Green - one beep	OPEN (only one click necessary)
1 ÷ 4	Red - two beeps	CLOSE (prolonged pressing of button)
> 4	None - decreasing sound	NO FUNCTION (release the key)



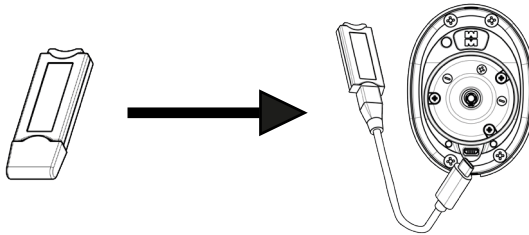
USB INPUT

Pairing procedure

Pairing with Mottura accessories and smartphones is done via the master key 99.772 to connect to the microB USB port used to give authorisation to the pairing, if it is missing it is not possible to perform this function.

This key contains a unique code, keep it carefully in a safe place. If it is lost or broken it is possible to ask Mottura Club for a duplicate by presenting the Qr Code generated by the APP ULIXE.

The master key is memorised by XMOTO the first time it is used, therefore it can be shared with other knobs of the same user.

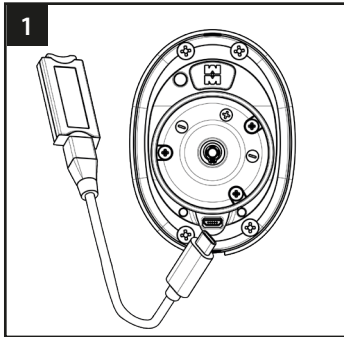


Battery recharge function (Version with Rechargeable Batteries)

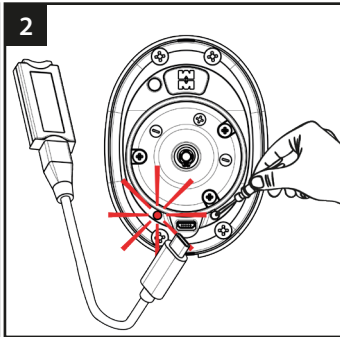
For a knob in the Rechargeable Battery version use the USB port for recharging the batteries. They can be recharged by connecting the specific wall charger or power bank to the USB-micro B socket. The BLUE led will go on during the recharging phase, when it goes off remove the external battery charger cable. It is advisable to choose a part of the day for recharging when the door will not be used for 4-5 hours.



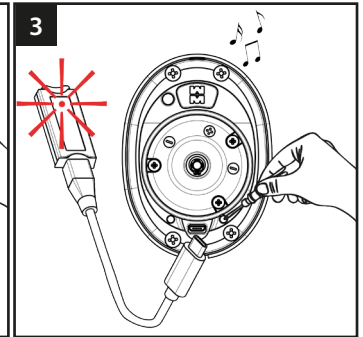
PAIRING PROCEDURE WITH SMARTPHONE (max 10 devices)



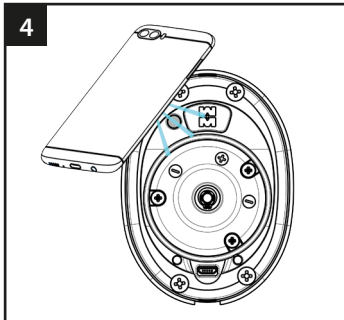
1 Connect the master key to the knob. Start the ULIXE app on the smartphone, access the reserved area and follow the procedure.



2 Press the programming button (0-3 sec. max) until the RED led goes on fixed. Release the button, and check that the RED led is flashing.



3 Press the programming button again. The RED led on the key will light up and flash and at the end the knob will emit a sound at increasing volume.

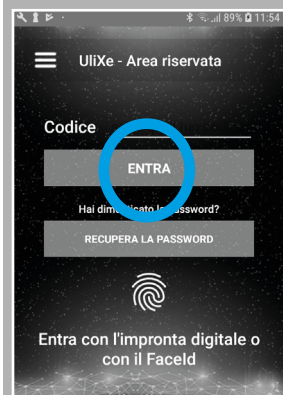


4 Follow the authentication procedures on the smartphone, bringing it near the brightness sensor which will receive flashes of light emitted by the smartphone. Once finished the device will be paired.

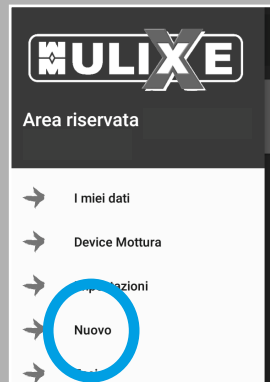
Ulixé is the first application developed by Mottura that contains all the world of Mottura motorised locks.

It can be used to:

- Manage various Mottura devices
- Control proximity Opening/Closing
- Manage the B&B service
- Set the device Parameters
- Possibility of displaying Mottura Products - Check the Mottura Club closest to you
- Display the Instructions and Manuals of the products

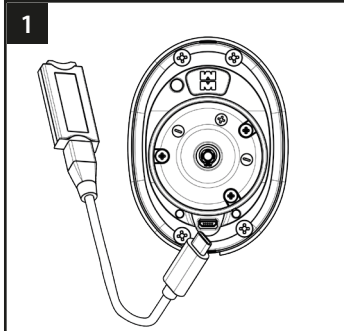


ENTER IN THE RESERVED AREA

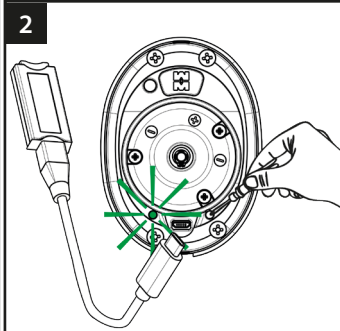


ADD A NEW DEVICE AND FOLLOW THE PROCEDURE

PAIRING PROCEDURE WITH MOTTURA ACCESSORIES

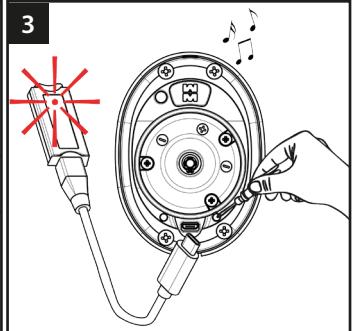


1 Connect the master key to the knob.

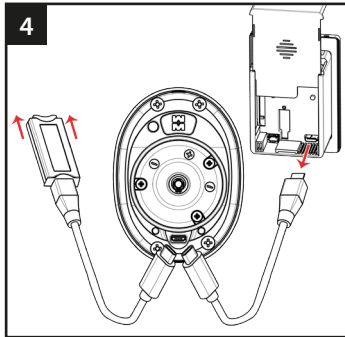


2 Connect the master key to the knob.

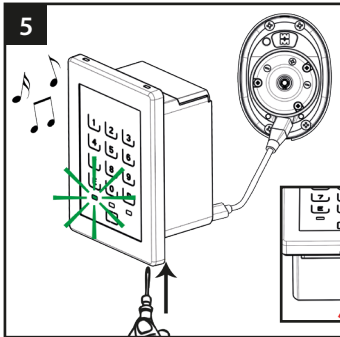
Press the programming button (3÷6 sec. max) until the GREEN led goes on and flash and at the end the knob will fix. Release the button, and check that the GREEN led is flashing.



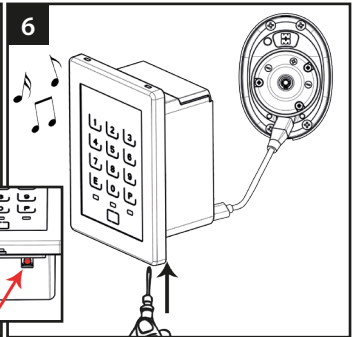
3 Press the programming button again.



4 Disconnect the key from the cable and connect the cable to the accessory on the USB-C connector.



5 Press the programming button on the accessory within the limit of the required 20 sec. time until the led becomes fixed GREEN. Release the button making sure the GREEN led flashes.



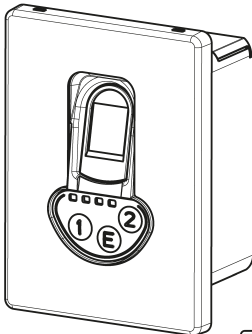
6 Press the button again until hearing a beep in the accessory that indicates the beginning of the sequence. Three beeps close together and an increasing sound first on the knob and then on the accessory indicate the end of the procedure that takes around 30-40 sec.

ESCUTCHEONS COMPATIBLE WITH THE BLE (Bluetooth low energy) SYSTEM

MXTRACK

WITH BATTERIES
Art. 99.781

WITH NETWORK
Art. 99.782



MXDIGIT

WITH BATTERIES
Art. 99.779

WITH NETWORK
Art. 99.780

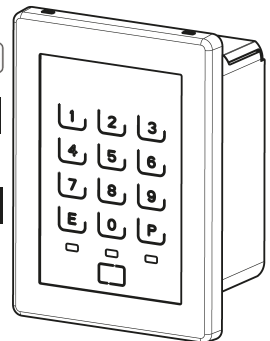



TABLE OF ERROR WARNINGS

SOUND	LIT	PROBLEM	DESCRIPTION
4 Decreasing NOTES	None	Lock not learned	The lock learning procedure has not been performed. The sound repeats 2 times with the opening control.
2 long decreasing notes for 3 times in a row	Flashing yellow	Battery low	The batteries are low.
2 short decreasing notes for 5 times in a row	Flashing red	Battery flat	The batteries are completely flat.
9 short notes in a row	None	Movement with problems	Possible jamming, friction or rubbing during the operations.
2 high notes and 2 low notes	None	Electronic problem	The internal electronics detected over heating or excessive instantaneous absorption.
3 high-low-high notes every 2 sec. for 60 seconds then pause for 2 minutes	Flashing red	Battery type error	HAZARD!  Do not recharge the batteries. Primary batteries may have been inserted on a knob as rechargeable batteries.

SERIAL CODE