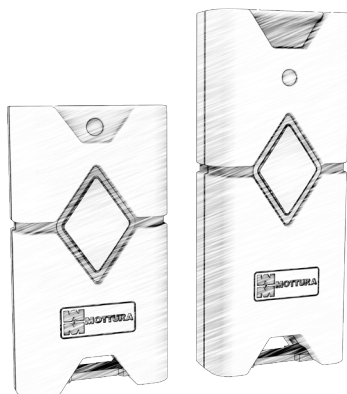


REMOTE CONTROL BLUETOOTH INSTALLATION AND USER MANUAL

Art. 99BKEY0001 / 02 / 03



scan the qr code to
download the app



GENERAL INSTRUCTIONS

This manual is intended for technically qualified and trained installers.

Mottura Serrature di Sicurezza S.p.A. thanks you for choosing this product and reminds you:

- To read these instructions very carefully before installing this product and before doing any maintenance.
- That all assembly and connection procedures must follow good practice procedures and comply with current laws and standards.
- To NOT install this product in explosive rooms or atmospheres or in the presence of inflammable fumes/gases.
- DO NOT install this product on a door with risk of contact with water or atmospheric agents unless the door is adequately protected.
- To switch off the power supply and disconnect all live parts before doing any installation or maintenance work on the product. To take all possible precautions to eliminate the risk of electrical shock when performing installation or maintenance procedures described in this manual.
- That the installer must deliver these instructions and all of the maintenance instructions to the user.
- To keep these instructions for future reference and attach the sales receipt to validate the warranty.
- To contact authorized dealers only in case of problems.

Mottura Serrature di Sicurezza S.p.A. may change the characteristics of the products described in these instructions at any time and without notice.

WARRANTY TERMS

This product has been inspected by Mottura Serrature di Sicurezza S.p.A. and is guaranteed to be free of all manufacturing defects for the time specified by current Italian law, starting on the date of purchase indicated on the sales receipt. The warranty is in force if the sales receipt, showing details identifying the product, is exhibited to customer service personnel. The warranty covers the replacement or repair of parts found defective at origin due to manufacturing defects. Costs of shipping to and from service centres will be paid by the customer. In case of repeated malfunctions of the same type or unrepairable defects, Mottura Serrature di Sicurezza S.p.A. may, at its own discretion, replace the entire product. The warranty on the replaced product will continue until expiration of the original warranty. If service work must be performed at the customer's premises, the customer shall – if requested – pay the authorised technical personnel travel expenses.

Risks related to product transportation shall be covered by the customer when shipped directly by the customer, and by the authorised technician when the product is picked up and shipped by the technician

LIMITS OF LIABILITY

The warranty does not cover damage deriving from:

- Negligence, carelessness or use in any manner not described in these instructions
- Failure to protect the device before doing any procedure that may generate scrap or waste (welding, drilling of panels, drilling of structure, etc.) that prevents its correct functioning
- Maintenance performed in any manner not described in these instructions or by unauthorised personnel
- Transport without the necessary precautions and from any circumstances that cannot be attributed to manufacturing defects.

In addition, Mottura Serrature di Sicurezza S.p.A. declines all liability for any damage to persons or property deriving from failure to observe all of the precautions described herein.

N.B. : All electrical connections and mounting operations as well as subsequent service operations must be performed with the product DISCONNECTED from the power supply system.



safeguarding your security

MADE
IN
ITALY



AVVERTENZE

The device contains a short-range radio frequency transmitter in the 2402÷2480 MHz frequency band and uses Bluetooth Low Energy (BLE) technology. Transmit power: 0dBm. Restrictions on use: None. The permitted European band is included in the ERC/REC 70-03 document as band b) of Annex 3: WIDEBAND DATA TRANSMISSION SYSTEMS. There are no restrictions for use in EU+EFTA countries for this band. Product compliant with the RED Directive 2014/53/EU.

DoC completa: <https://www.mottura.it/it/download/certificazioni/doc>



POWER SUPPLY

The device is powered by an Alkaline battery mod. (CR2032).

VERSIONS

Art. 99BKEY0002



bKEY BCI
Remote control
bluetooth with
internal key
(not included)

Art. 99BKEY0001



bKEY B
Bluetooth remote
control

Art. 99BKEY0003



bKEY BCE
Remote control
bluetooth +
External input

ACCESSORY



Art. 99B4556100
Wall support




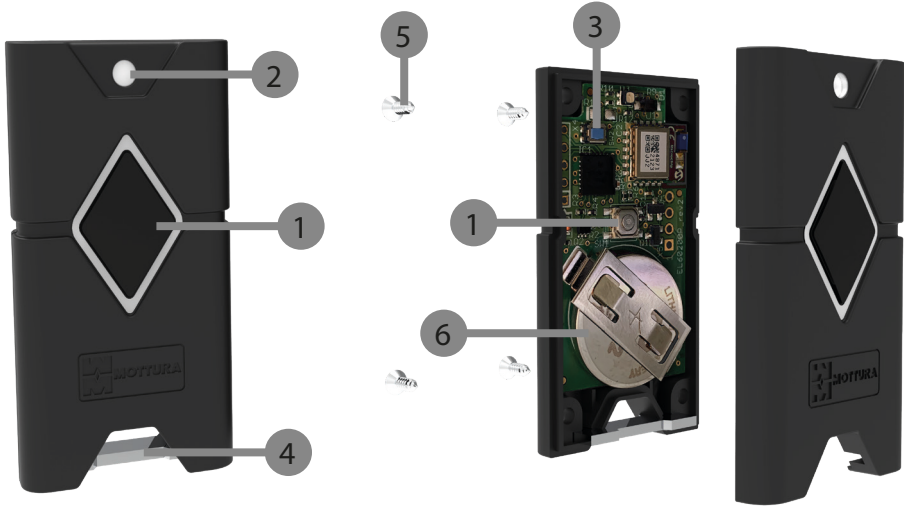
Pursuant to article 26 of Italian Legislative Decree no. 49 of 14 March 2014 "Implementation of EU Directive 2012/19 concerning waste electrical and electronic equipment (WEEE)" and article 9 of Italian Legislative Decree no. 188 of 20 November 2008 "Implementation of EC Directive 2006/66 on batteries and accumulators and waste batteries and accumulators" adequate waste sorting for subsequent sending of disposed equipment to recycling, treatment and environmentally compatible disposal contributes to avoiding possible negative effects on the environment and human health and promotes reuse and/or recycling of the materials composing the equipment.

Unlawful disposal of the product by the user may result in the application of penalties pursuant to current laws and regulations on the matter. We remind that batteries and power adapters, if present, must be removed before the device is disposed. Batteries and adapters must be collected and separately disposed.



THE REMOTE CONTROL

 Attention, to access the reset button you will need to remove the 4 screws on the back of the remote control and remove the front cover.



- 1 Main button
- 3 RESET button
- 5 Cover fixing screws
- 2 Signal LED
- 4 Key Holder
- 6 Battery (CR2032)

TECHNICAL DATA

POWER SUPPLY	1X BATTERY CR2032 (INSERT IN THE CORRECT DIRECTION, INDICATED ON THE CIRCUIT)
NUMBER OF LOCKS THAT CAN BE ASSOCIATED	Max 10 locks with a minimum distance of 10 meters apart
OPERATING TEMPERATURE	-10 C° / + 80 C°
IP PROTECTION RATING	No protection
DIMENSIONS	Version B (30x55x10mm) Version BCI (30X75X15mm) Version BCE (35x55x20mm)

BATTERY REPLACEMENT

Remove the screws on the back of the remote control **5**, slide the battery out with your fingers **6** sideways until it pops out. After removing the exhausted battery, insert the new one paying attention to the polarity + / -.

FUNCTIONS and PROGRAMMING

FUNCTION	PROCEDURE	(LED Color) NOTES
OPENING COMMAND	Press the main button once	<ul style="list-style-type: none"> ● = Scan/Connect ● = Communication OK ● x4 = No locks found ● x2 = Connection failed ● x2 = Unauthorized user
SMARTPHONE CONNECTION MODE (REQUIRES APP bMOTTURA)	Press and hold the main button for 5 seconds until the BLUE LED lights up	To exit, press again until it turns off
FACTORY RESET	Press the main button and then the reset button (internal)	○○○○ = Reset done (White flashes)
FACTORY RESET VIA bMOTTURA APP	Scan the QR Code and follow the procedure indicated	

bKEY BCE CONNECTION



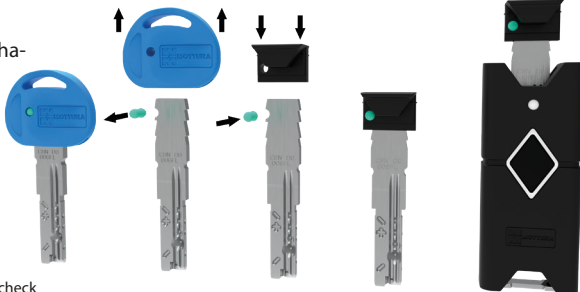
ATTENTION: The INPUT does NOT support electrical voltages



INPUT	FUNCTION
1	NONE
2	Input Dry Contact
3	Input Dry Contact
4	NONE

bKEY BCI (Internal key installation)

Assembly sequence of the handle for the internal mechanical key.
(The key is not included with the remote control)



For correct disposal, check the provisions of your Municipality



COMPANY WITH MANAGEMENT SYSTEM CERTIFIED BY DNV ISO 9001-ISO 45001